

Autor: Importador Puntotek V2.9

Fecha de creación: 27/03/2022

Copyright:

Medidas en puntos: 40 * 42

Número de hilos: 4

Puntos totales: 884

Nombre: AIDA 14









Material: Algodón.

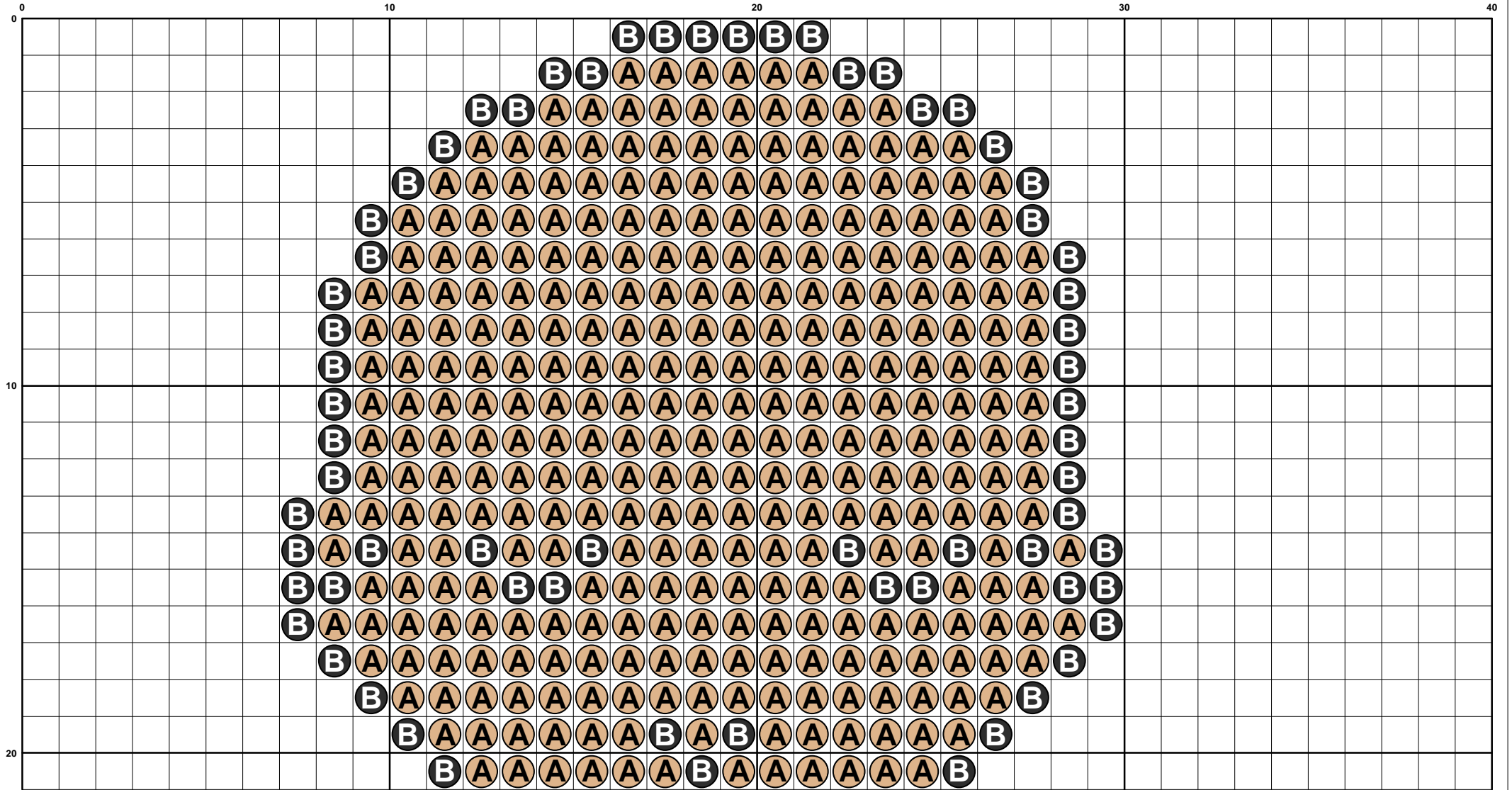
Medidas: 7,27 * 7,64 cms.

 PUNTO LINEAL

 PUNTO DE CRUZ

 PUNTO FRANCES

		Marca	Referencia	Nombre	Puntos
	1	 A	HAMA BEAD H27	BEIS	403
	2	 B	HAMA BEAD H18	NEGRO	195
	3	 C	HAMA BEAD H43	AMARILLO PASTEL	184
	4	 D	HAMA BEAD H21	MARRON CLARO	102



The grid contains the following letters in each row (row 0 is the top row, row 39 is the bottom row):

- Row 0: (8,0) B, (9,0) A, (10,0) B, (11,0) B, (12,0) A, (13,0) A, (14,0) A, (15,0) A, (16,0) A, (17,0) A, (18,0) A, (19,0) A, (20,0) A, (21,0) A, (22,0) A, (23,0) B, (24,0) B, (25,0) C, (26,0) B
- Row 1: (7,1) B, (8,1) A, (9,1) A, (10,1) A, (11,1) A, (12,1) B, (13,1) B, (14,1) B, (15,1) B, (16,1) B, (17,1) B, (18,1) B, (19,1) B, (20,1) B, (21,1) C, (22,1) C, (23,1) C, (24,1) C, (25,1) B
- Row 2: (6,2) B, (7,2) A, (8,2) A, (9,2) A, (10,2) A, (11,2) A, (12,2) A, (13,2) A, (14,2) A, (15,2) B, (16,2) B, (17,2) B, (18,2) A, (19,2) A, (20,2) C, (21,2) C, (22,2) B, (23,2) C, (24,2) C, (25,2) C, (26,2) C, (27,2) B
- Row 3: (6,3) B, (7,3) A, (8,3) A, (9,3) A, (10,3) A, (11,3) A, (12,3) B, (13,3) B, (14,3) A, (15,3) A, (16,3) B, (17,3) A, (18,3) A, (19,3) B, (20,3) B, (21,3) C, (22,3) C, (23,3) C, (24,3) C, (25,3) B
- Row 4: (8,4) B, (9,4) A, (10,4) A, (11,4) A, (12,4) A, (13,4) A, (14,4) A, (15,4) B, (16,4) A, (17,4) A, (18,4) A, (19,4) B, (20,4) C, (21,4) C, (22,4) C, (23,4) C, (24,4) B
- Row 5: (9,5) B, (10,5) A, (11,5) A, (12,5) A, (13,5) A, (14,5) A, (15,5) B, (16,5) A, (17,5) A, (18,5) A, (19,5) B, (20,5) C, (21,5) C, (22,5) C, (23,5) B
- Row 6: (8,6) B, (9,6) B, (10,6) C, (11,6) B, (12,6) B, (13,6) A, (14,6) A, (15,6) A, (16,6) B, (17,6) A, (18,6) A, (19,6) B, (20,6) C, (21,6) C, (22,6) B
- Row 7: (7,7) B, (8,7) C, (9,7) C, (10,7) C, (11,7) C, (12,7) C, (13,7) C, (14,7) B, (15,7) B, (16,7) C, (17,7) C, (18,7) B, (19,7) B, (20,7) C, (21,7) C, (22,7) C, (23,7) C, (24,7) C, (25,7) C, (26,7) B
- Row 8: (6,8) B, (7,8) C, (8,8) C, (9,8) C, (10,8) C, (11,8) C, (12,8) C, (13,8) C, (14,8) C, (15,8) C, (16,8) C, (17,8) C, (18,8) C, (19,8) C, (20,8) C, (21,8) C, (22,8) C, (23,8) C, (24,8) C, (25,8) C, (26,8) C, (27,8) B
- Row 9: (5,9) B, (6,9) C, (7,9) C, (8,9) C, (9,9) C, (10,9) C, (11,9) C, (12,9) C, (13,9) C, (14,9) C, (15,9) C, (16,9) C, (17,9) C, (18,9) C, (19,9) C, (20,9) C, (21,9) C, (22,9) C, (23,9) C, (24,9) C, (25,9) C, (26,9) C, (27,9) B
- Row 10: (6,10) B, (7,10) C, (8,10) C, (9,10) C, (10,10) C, (11,10) C, (12,10) C, (13,10) C, (14,10) C, (15,10) C, (16,10) C, (17,10) C, (18,10) C, (19,10) C, (20,10) C, (21,10) C, (22,10) C, (23,10) C, (24,10) C, (25,10) C, (26,10) B
- Row 11: (7,11) B, (8,11) B, (9,11) C, (10,11) C, (11,11) C, (12,11) C, (13,11) C, (14,11) C, (15,11) C, (16,11) C, (17,11) C, (18,11) C, (19,11) C, (20,11) C, (21,11) C, (22,11) C, (23,11) C, (24,11) B, (25,11) B
- Row 12: (8,12) B, (9,12) B, (10,12) B, (11,12) B, (12,12) B, (13,12) B, (14,12) B, (15,12) B, (16,12) B, (17,12) B, (18,12) B, (19,12) C, (20,12) C, (21,12) C, (22,12) C, (23,12) C, (24,12) C, (25,12) B, (26,12) B, (27,12) B, (28,12) B, (29,12) B, (30,12) B, (31,12) B, (32,12) B, (33,12) B, (34,12) B, (35,12) B, (36,12) B, (37,12) B, (38,12) B
- Row 13: (6,13) B, (7,13) D, (8,13) D, (9,13) D, (10,13) D, (11,13) D, (12,13) D, (13,13) D, (14,13) D, (15,13) D, (16,13) D, (17,13) D, (18,13) D, (19,13) D, (20,13) D, (21,13) D, (22,13) D, (23,13) D, (24,13) D, (25,13) D, (26,13) D, (27,13) D, (28,13) D, (29,13) D, (30,13) D, (31,13) D, (32,13) D, (33,13) D, (34,13) D, (35,13) D, (36,13) D, (37,13) D, (38,13) D, (39,13) B
- Row 14: (5,14) B, (6,14) D, (7,14) D, (8,14) D, (9,14) D, (10,14) D, (11,14) D, (12,14) D, (13,14) D, (14,14) D, (15,14) D, (16,14) D, (17,14) D, (18,14) D, (19,14) D, (20,14) D, (21,14) D, (22,14) D, (23,14) D, (24,14) D, (25,14) D, (26,14) D, (27,14) D, (28,14) D, (29,14) D, (30,14) D, (31,14) D, (32,14) D, (33,14) D, (34,14) D, (35,14) D, (36,14) D, (37,14) D, (38,14) D, (39,14) B